



ego

Wood & Vinyl Floor

The Deziire Collection
Discover the art of flooring



INTRODUCTION

The **Dezire Collection - LVT** is made with a series of layers; the stability layer helps the product to lay flat and level. The décor layer gives its highly realistic design whilst the PVC wear layer protects the floor's design from everyday wear and tear, and our U-Protect™ Coating System provides added stain resistance.

Luxury vinyl tiles are so thin is due to their high density and resilience.

They are more than strong enough to use in heavy traffic commercial Installations.

Available in a range of shapes, sizes and effects, you can create an authentic looking floor in your home, without the practical drawbacks of natural products.

FEATURES

- » Beautiful and durable
- » U Protect - A coating system that makes it antibacterial, stain resistant and easy to clean.
- » Formaldehyde free, Fire class Bf1
- » Environmental friendly, TVOC < 10ug/m3
- » Moldfree and antibacterial
- » Super stable and anti-slip
- » Resistance to cigarette burns.
- » Ease of maintenance
- » Warranty against manufacturing defects - residential - 7 years, commercial - 3 years
- » Dimension: 914.4*457.2*2/0.3mm; sqft/box: 36 sqft.

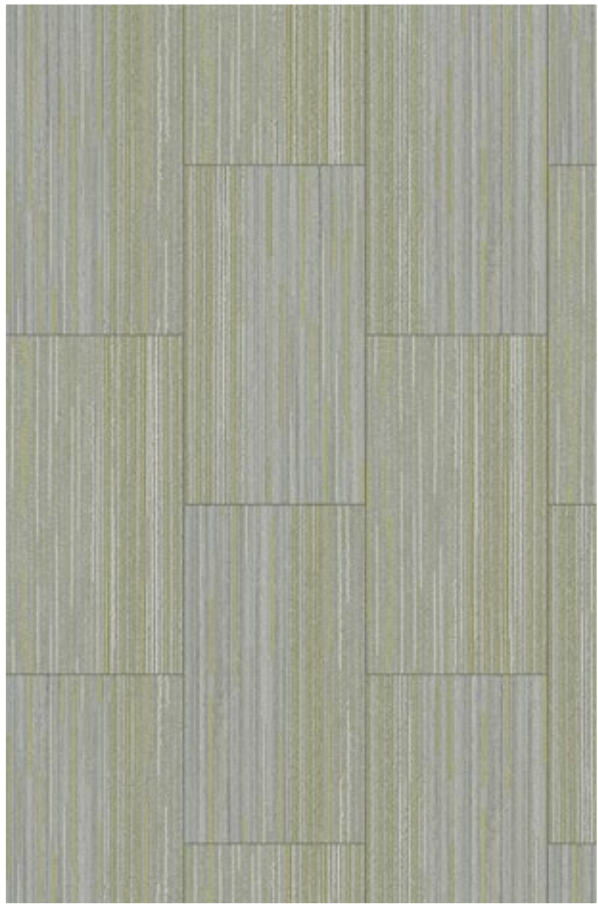
TECHNICAL DATASHEET

Dimensions: 914.4 x457.2 x 2/0.3mm

Edition 02.2021

Characteristics		Results	Test Method
General appearance	Side length, width squareness and straightness	Pass	ISO 24342
	Overall thickness	Pass	ISO 24342
	Dimensional stability after exposure to heat	Pass	ISO 24342
	Residual indentation	Pass	ISO 24343-1
Color fastness to artificial light		Grade 6	ISO 105-B02
Determination of flatness		Pass	ISO 10582
Determination of openings between floor panels		Pass	ISO 10582
Determination of height differences between floor panels		Pass	ISO 10582
Fire reaction		Bfl-S1	EN13501-1 Bfl-S1
Abrasion resistance	Method A	>4000 cycles, AC4	EN 13329
Micro-scratch resistance	Procedure A	MSR-A1	EN 16094:2012
	Procedure B	MSR-B2	
Effect of a furniture leg		Pass	ISO 16581
Castor chair resistance	group 1 and 2	Pass	ISO 4918
Burning cigarette test	Method B	Rating 5	EN 1399
Resistance to staining		Pass	EN 423:2001
Additional features if applicable			
19 Heavy metal migration		Not detected	EN 71-3
SVHC (Substance of very high concern)		meet requirement	REACH
39 Phthalates content		54	EN14372:2004
Slip resistance		Rating 10	DIN 51130
Plant Certification		Certified	ISO 14001
Indoor Air Quality		Certified	FloorScore

■ Carpet Designs

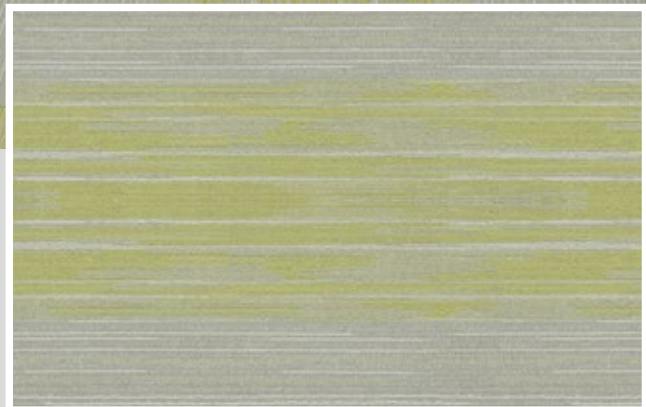


EG604-GC ▶



*The Printed decors only give an impression of the real colors and variation of colors and tones in the design, but may not be identical to the real color.

■ Carpet Designs



EG605-GH ▶

(Highlighter to be used in combination with EG604-GC)

*The Printed decors only give an impression of the real colors and variation of colors and tones in the design, but may not be identical to the real color.

■ Carpet Designs



EG606-YC ▶

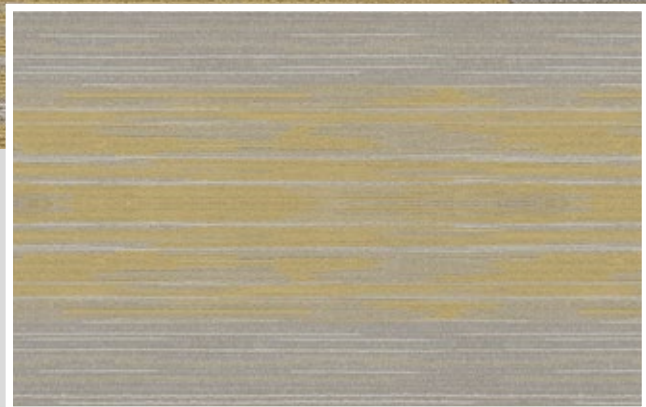


■ Carpet Designs



EG607-YH ▶

(Highlighter to be used in combination with EG606-YC)



*The Printed decors only give an impression of the real colors and variation of colors and tones in the design, but may not be identical to the real color.

■ Carpet Designs

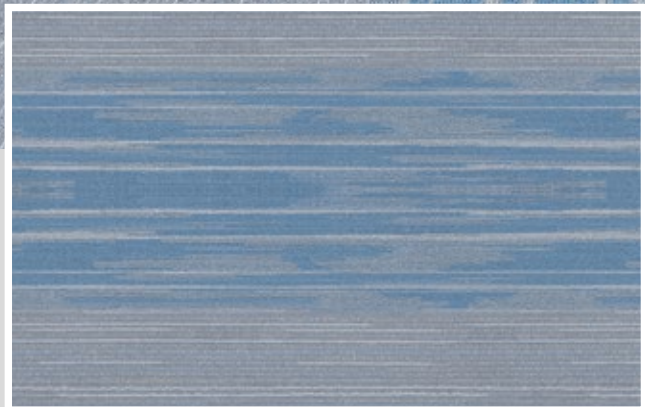


EG608-BC ▶



*The Printed decors only give an impression of the real colors and variation of colors and tones in the design, but may not be identical to the real color.

■ Carpet Designs



EG609-BH ▶

(Highlighter to be used in combination with EG604-BC)

*The Printed decors only give an impression of the real colors and variation of colors and tones in the design, but may not be identical to the real color.

Terazzo Designs.



EG501-T ▶

*The Printed decors only give an impression of the real colors and variation of colors and tones in the design, but may not be identical to the real color.

Terazzo Designs.



EG505-S ▶



*The Printed decors only give an impression of the real colors and variation of colors and tones in the design, but may not be identical to the real color.

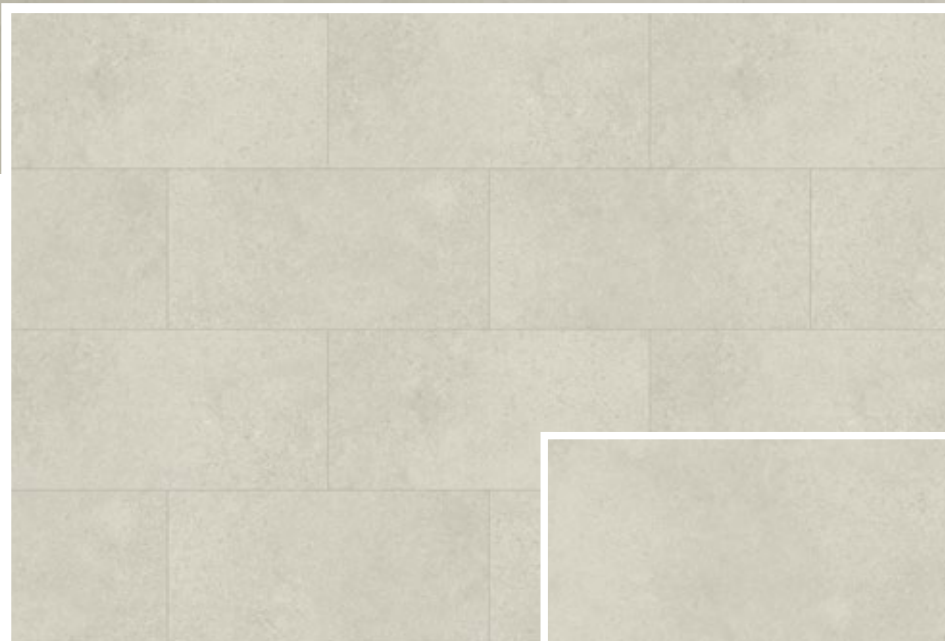
Terazzo Designs.



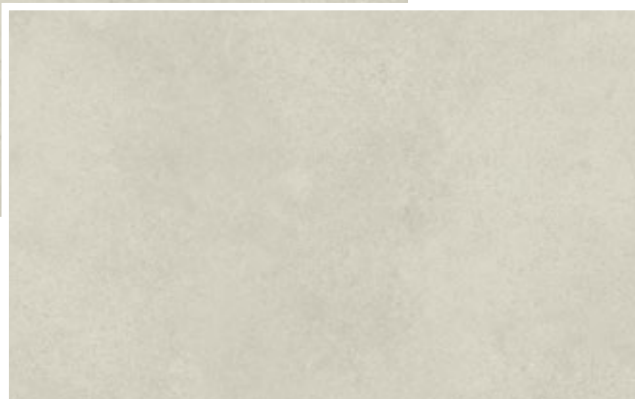
EG505-T ▶

*The Printed decors only give an impression of the real colors and variation of colors and tones in the design, but may not be identical to the real color.

Stone Designs ■



◀ EG504-S



*The Printed decors only give an impression of the real colors and variation of colors and tones in the design, but may not be identical to the real color.

Stone Designs ■

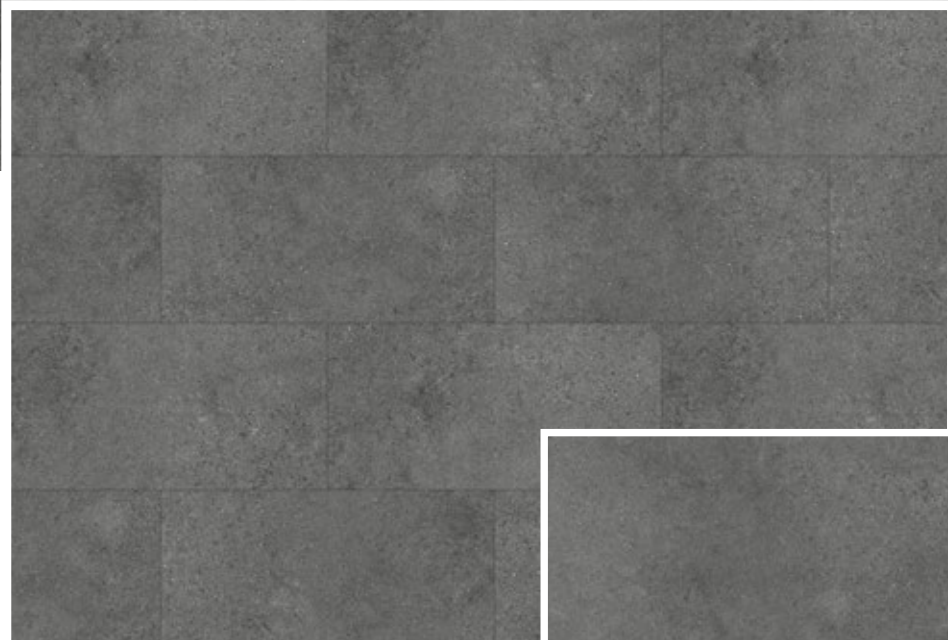


◀ EG505-S



*The Printed decors only give an impression of the real colors and variation of colors and tones in the design, but may not be identical to the real color.

Stone Designs ■



◀ EG506-S



*The Printed decors only give an impression of the real colors and variation of colors and tones in the design, but may not be identical to the real color.

■ INSTALLATION PROCEDURE ■

1. BASIC REQUIREMENTS ■

Flooring must be installed at the final stage in any type of construction. Allow enough time for adhesive to cure. Keep foot traffic off of the floor for at least 24 hours.

2. MEASURING ■

Installation inspection such as quantity, color, design, etc. must be checked and confirmed prior to installation.

3. ROOM TEMPERATURE ■

Flooring materials, adhesive and room temperature must be maintained from 60°F to 75°F (18°C — 25°C) for at least 24 hours before, during and after the installation.

CONDITIONS AND PREPARATION OF SUB-FLOOR BASIC CONDITIONS ■

Any defects found in concrete substrates must be corrected. Newly installed concrete substrates contain excessive moisture residues. Ideal time for the moisture residue to dry completely is 28 days / millimeter (1 day / inch). Usually the thickness of the concrete slab is set to 50cm (20"). Moisture dissipation time can depend upon thickness of the slab and other external conditions. Substrates must be smooth and dry enough to receive resilient flooring.

MOISTURE ■

Moisture test must be performed for both new and existing concrete before installation. Recommend measuring moisture using by apparatus for measuring humidity. (Maker : Kett, Grade: HI-520). Moisture test result should be less than 5.0%.

START OF INSTALLATION - PLANKS ■

- When using planks from two or more cartons, check to be sure all pattern and lot numbers are the same to ensure proper color match.
- Products with directional arrows on the back should be installed with the arrows all pointing in the same direction unless you are installing custom layouts.
- Before installing the material, plan the layout so plank joints fall at least 6 inches (15 cm) away from subfloor and underlayment joints.
- Find the center point in the room. Divide the room into equal quadrants by marking two perpendicular lines on the subfloor intersecting at the center point. Depending on your layout you may also start your row along a wall.
- Since walls are not always straight, snap a chalk line. Do not install over expansion joints.

STEP ■

1. Apply adhesive with the recommended trowel and allow to dry to the touch before installing floor. Don't install in wet adhesive. Only spread as much adhesive as you can cover within 2 hours depending on temperature and humidity.
2. Install all planks/tiles with directional arrows pointing in the same direction. Install the field area first.
3. Apply adhesive as noted in Step 1 to the remaining portion of the room, allow adhesive to dry and complete the installation.
4. Roll the installed flooring in four directions within 30 minutes after completing installation using a 100 lb. roller (45 kg.) (Minimum).

POST INSTALLATION CARE ■

- Remove dirt and other foreign materials. Adhesive residues must be removed immediately with damp mop or cloth.
- If the adhesive has already cured, remove them using mineral spirits or denatured alcohol on a clean, white cloth.
- Newly installed flooring must not have foot traffic for at least 24 - 48 hours.
- Do not clean the floor during this time. Minimize foot traffic.
- Water cleaning may cause notable decrease in adhesion strength.
- Placing furniture or heavy objects within 24 hours after the installation may leave permanent indentations on the floor surface.

CAUTION ■

Wet floors can cause accidents. Slippery floors due to improper maintenance may cause slip and fall accidents. Use a hand roller under toe kicks and other hard to get areas. Immediately remove any excess adhesive from the surface of the flooring using a clean white cloth dampened with a neutral detergent and water or with alcohol.

NOTE: Drying time will vary depending on substrate porosity and ambient temperature and humidity.

PRECAUTIONS: Planks/tiles may be walked on immediately; however, the floor should be protected with plywood when moving heavy furniture and appliances back into the room.

DO NOT wash or scrub the new flooring for at least 5 days after the installation. This will allow planks/tiles to become "seated" in the adhesive and prevent excess moisture from interfering with the adhesive bond.

MAINTENANCE ■

DO'S ■

- Remove dirt and other foreign materials thoroughly with vacuum or broom.
- Damp mop the floor, being careful not to flood the floor with excess water.
- Stubborn areas should be allowed to soak for 5-10 minutes then have the excess moisture mopped off of the floor.
- Damp mop with a rinse pad. Soak the rinse residues completely and wait until it dries.
- Use only buffing and cleaning pads recommended by Ego Floor. Using strong abrasive pad that are too strong will result in excessive scratching and reduce the life of the floor.
- Use WALK OFF MATS on the floor to protect from soil or dirt. Controlling grit and soil is absolutely crucial to prolonging the attractive appearance of your Ego floor
- Attempt to protect the floor from direct sunlight.
- When moving furniture or heavy objects, protect the floor by laying plywood.
- Use proper floor protectors for portable furniture like wheel chairs, carts, etc., use large diameter wheels.
- Normal soap or dishwasher detergent can cause permanent damage and slippery floors. Use only proper cleaners for resilient flooring.
- When cleaning the floor, post pedestrian warning signs until the floor are completely dry.

DON'TS ■

- Do not mop the floor with oil base solutions or sealer compound detergents
- Furniture wax or window cleaner may cause slippery conditions. Do not spill cleaning compounds on the floor.
- Do not use aerosol insecticide, vermicide, perfume that contain oil or other solutions can make flooring slippery when it spills on the floor. Some chemical compounds like this may cause permanent damage to the floor.







Corporate Office: Universal Majestic, 06th Floor, Room No. 606
CTS No. 4A/8/1, Village Borla, P.L. Lokhande Marg, Chembur (west), Mumbai - 400 043
Tel: +91 22 25500265 | Email: sales@egopremium.com | Website: www.egopremium.com